



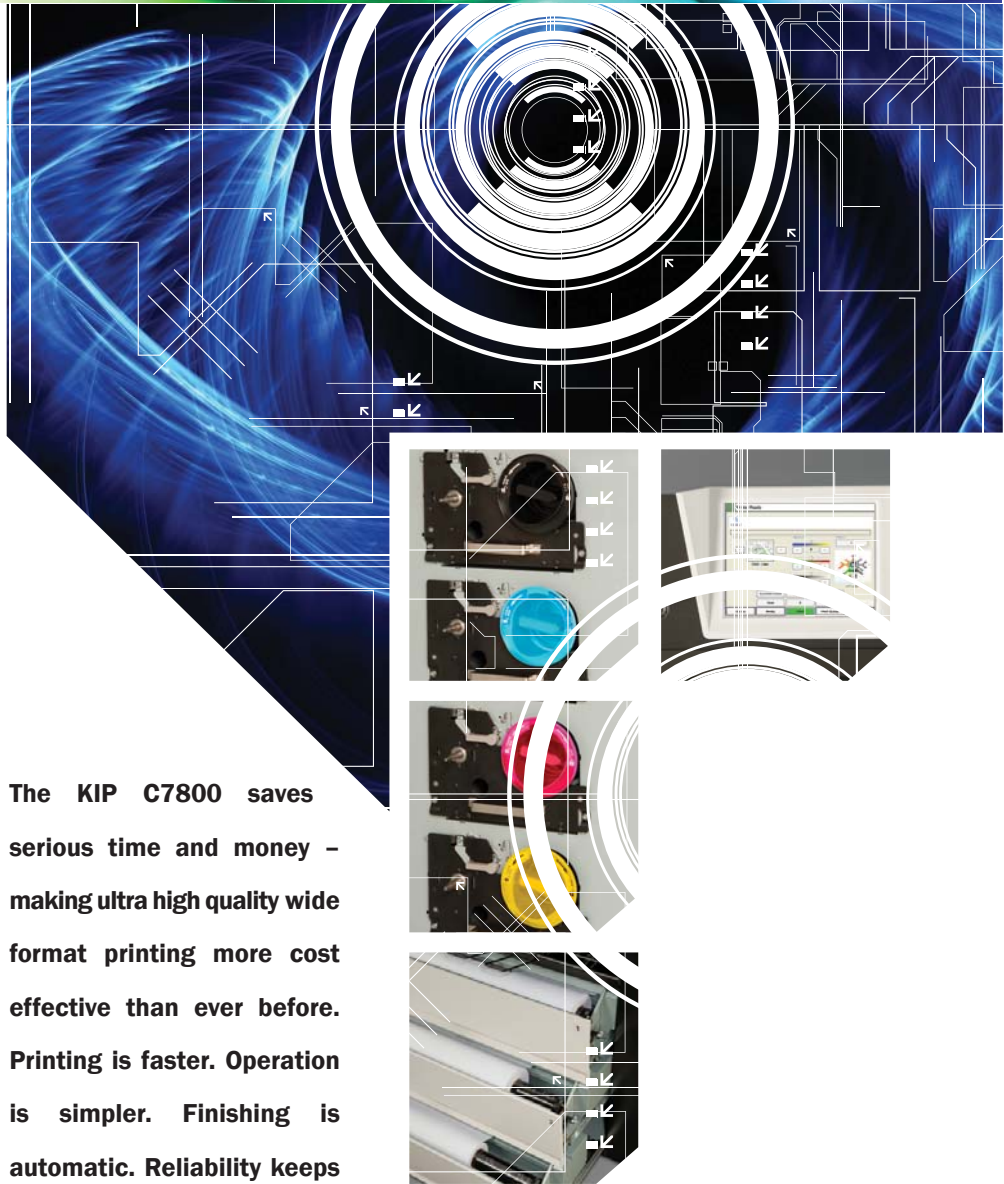
C7800 HIGH PRODUCTION COLOR PRINT SYSTEM



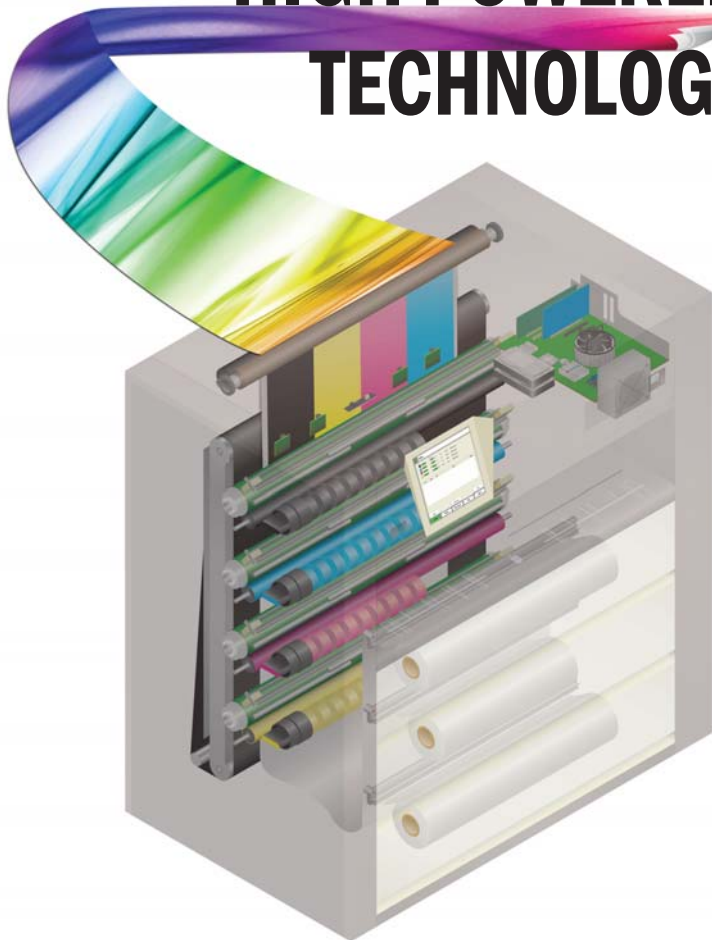
HIGH PRODUCTION COLOR PRINT SYSTEM

The KIP C7800 is a color and black & white high production print system. The system is a comprehensive solution for all types of wide format printing tasks that require the highest levels of quality and performance. The system's workflow provides powerful print control for any production environment from a range of print submission applications, cloud printing, scan & copy, variable data printing and fully integrated stacking and folding.

The KIP C7800 saves serious time and money – making ultra high quality wide format printing more cost effective than ever before. Printing is faster. Operation is simpler. Finishing is automatic. Reliability keeps you up and running. Image quality will keep your customers coming back for more.



HIGH POWERED TECHNOLOGY



BLACK & WHITE AND FULL COLOR PRINTING

The C7800 color and b&w LED production printing system is based on a unique design that lowers the individual operational costs of both Color and B&W print production.



IMAGE QUALITY

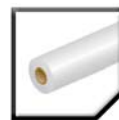
Four advanced KIP LED imaging heads provide outstanding 600 x 2400 DPI resolution. LED imaging heads provide direct toner application for razor sharp details.



PRODUCTION PRINTING

The KIP C7800 print system offers superb resolution at remarkable print speeds:

- Up to 4,200 sq. ft./390 sq. m. hour in b&w
- Up to 3,500 sq. ft. /325 sq. m. hour in color



QUICK SWITCH TECHNOLOGY

KIP C7800 print technology eliminates roll switching delays for increased productivity. Three media decks and an auto sheet feeder deliver mixed print sizes at full production speed.



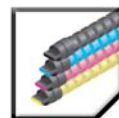
MEDIA LOAD ASSIST

An ergonomic spindle system simplifies the process of loading the 4,500 sq. ft./418 sq. m. media capacity and the printer automatically advances the media without user assistance.



EASY TRIM

A button is conveniently located in each media deck for quick, automatic roll trimming after loading. This simple process ensures reliable and accurate performance for continuous print production.



LARGE CAPACITY TONER CARTRIDGES

Each CMYK cartridge contains 1,000gms of toner for a total capacity of 4,000gms – allowing longer uninterrupted color and b&w print runs for continuous system productivity.



AUTOMATIC IMAGE CALIBRATION

An exclusive single belt drive system performs automatic media calibrations for precise imaging, and bold, expressive color output. This simplifies changing media types.



EXTENDED PRINT LENGTHS

For maximum productivity and operator efficiency, the KIP C7800 handles print images up to 130'/39 meters long on any media type from any of its 3 integrated media roll decks.



LARGE COLOR TOUCHSCREEN

A large color touchscreen makes system operation simple, even for personnel without training. All major system functions are available at your fingertips from a single interface.

TECHNICAL DOCUMENTS & DISPLAY GRAPHICS

The KIP C7800 color and B&W print system is designed for technical, graphic and office document users who require high demand output, precise imaging and bold, expressive color fidelity.

The system is a comprehensive solution for a range of wide format printing tasks spanning everything from architectural, engineering, and construction documents—to maps, posters, signs, and photo enlargements—without sacrificing quality or performance.

TECHNICAL DOCUMENT CREATION

- COLOR 3D RENDERINGS
- GRAPHICAL INLAYS
- EXPLODED VIEW SCHEMATICS
- TECHNICAL DIAGRAMS
- MANUFACTURING PLANS
- ARCHITECTURAL RENDERINGS
- GEOGRAPHICAL MAPS

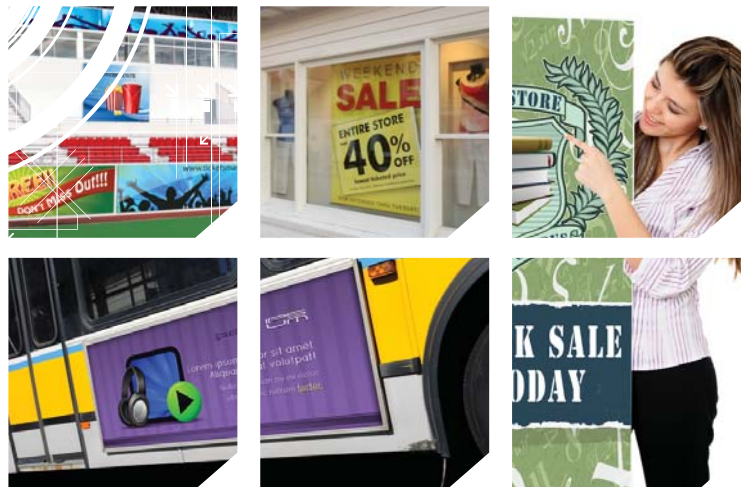


The KIP C7800 system produces lightfast; UV-proof prints which do not fade or exhibit color deterioration from exposure to light. Colorful banners, bulletins, and signs posted in hallways or placed in windows attract attention while large, full color business-style graphics deliver the right message at meetings, sales presentations, and public viewing areas.

KIP C7800 prints are ideal for most applications because of their ability to deliver high resolution image quality at production print speeds with exceptionally low operational costs.

DISPLAY GRAPHIC CREATION

- COMMERCIAL PRINTING
- GAMING INDUSTRY
- HOTEL & HOSPITALITY INDUSTRY
- DIGITAL PROOFING
- POINT OF PURCHASE
- GRAPHIC ARTS
- HEALTHCARE
- EDUCATION
- ENTERTAINMENT
- BEVERAGE/FOOD
- DISTRIBUTORS
- EXHIBITION
- LITIGATION GRAPHICS
- CORPORATE PRINTING





EXCEPTIONAL RESULTS

APPLICATION VERSATILITY

- DISPLAY GRAPHICS
- BUSINESS GRAPHICS
- TECHNICAL DOCUMENTS

CMYK DRY TONER SYSTEM

- LIGHTFAST
- ODORLESS
- WATERPROOF IMAGES
- READY FOR FINISHING

EXPANDED RANGE OF APPLICATIONS

- INDOOR MEDIA
- OUTDOOR MEDIA
- BACKLIT GRAPHICS

As traditional technical documents and creative applications converge, wide format document production requirements have become increasingly diversified to include 3D color renderings, graphic inlays, exploded view schematics, technical diagrams, manufacturing & architectural plans and maps of all kinds.

The KIP C7800 enables business professionals to effectively convey ideas and information by leveraging visual appeal and technical accuracy in color or black & white.

KIP C7800 HIGH PRODUCTION SYSTEM



HIGH SPEED B&W PRINTING

Up to 4,200 sq. ft./418 sq. m. hour in B&W

Up to 3,500 sq. ft./325 sq. m. hour in Color



HIGH SPEED COLOR PRINTING

With an operational speed of up to 3,500 square feet/325 sq. m. of color print production per hour, the KIP C7800 is the single most productive wide format LED color print system.

The unprecedented productivity of the KIP C7800 addresses the current reality of demanding print runs and compressed delivery times coupled with the highest quality expectations.

The excellent across the board performance of the KIP C7800 is sure to satisfy the most stringent demands on quality and productivity.



TOUCHSCREEN CONTROL

A large touchscreen makes operation simple, even for personnel without special training. All major system functions are available at your fingertips from a single interface.

The integrated color touchscreen of the KIP C7800 provides a powerful combination of control plus convenience – because you don't have to leave the printer to perform the command functions that make your work more productive.

The large display area provides plenty of room to control job queues, review system status, print from USB or network locations – and get a large, full color look at image files before you print, to make changes and see your results immediately.

The KIP C7800 produces black & white prints at a blazing 4,200 square feet/418 sq. m. per hour, making it competitive with the print production generated by dedicated black and white LED print systems.

In black & white only mode, the print media completely bypasses all color imaging units. This process increases system efficiency and lowers the overall cost of operation.

The KIP C7800 system delivers nonstop production levels with razor sharp line detail, superior half tones and smooth gradients .



MEDIA CAPACITY

The KIP C7800 easily accommodates high demand printing and long unattended runs via three integrated, auto-loading media roll drawers. The system handles media rolls from 11" to 36"/297mm to 914mm wide and provides ultra fast switching between rolls for collated sets of varying sizes or media types with no delay between prints.

In addition, an integrated automatic cut sheet feeder provides expanded versatility for handling specialty media types.

The KIP C7800 features a robust braking system designed to ensure uniform sheet sizes from all three of its integrated media drawers at extremely high speeds, regardless of media type, print size or image complexity.



STACKING & FOLDING

The KIP C7800 integrated stacking system improves the efficiency and productivity of your print production environment by providing a convenient place to stack multiple prints.

Unattended print runs can be scheduled with peace of mind due to bi-directional communication with the KIP C7800 print system.

The KIP C7800 integrated folding and finishing system automates wide-format document finishing by providing folding, stacking and collation in a compact design. The online folder is fully integrated with the KIP C7800 print system and software apps to provide a total print management solution.



COPYING & SCANNING

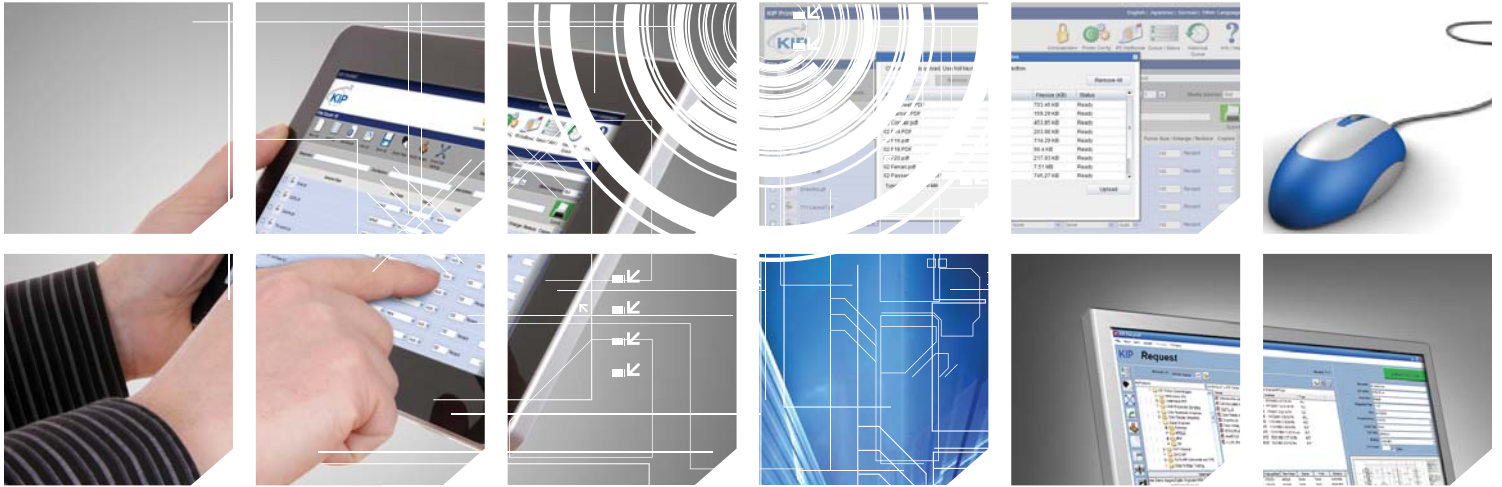
The KIP C7800 provides efficient, high speed hard-copy reproduction workflow. Exceptional image quality is achieved through true 600 x 600 dpi optical resolution via a choice of integrated KIP scanner with advanced optics and delicate original transport process for pixel-perfect images.

Best in class productivity is achieved from high resolution image capture and data transfer technologies for high speed copy and scan throughput without delays.

World-class flexibility is delivered via the ability to scan face up or face down and scan thick mounted originals and individual sheets of paper from a single unit.

POWERFUL PRINT CONTROL FOR ANY PRODUCTION ENVIRONMENT

The KIP C7800 system features a diversified software suite that forms the most open, integrated and powerful wide format color and black & white imaging system available. From PC & web-based viewing and printing of documents in a wide range of formats, to professional color management, application drivers, touchscreen & cloud printing, KIP C7800 software streamlines production print work, saves time and increases productivity.



KIP PRINT



KIP Print network printing software is an easy to use application designed to provide operators with a fast and accurate means of producing high quality print sets from all types of wide format digital files. Every aspect of KIP Print is centered on production workflow, providing complete command of a host of powerful printing and print management controls.

An intuitive ribbon style interface with an emphasis on job building; featuring column browsing, color thumbnail previews and total preflight control. Color and b&w documents are efficiently selected for printing in collated sets with the ability to designate custom output preferences before print submission.

- ADVANCED RIBBON STYLE INTERFACE
- THUMBNAIL IMAGE PREVIEWS IN COLOR AND BLACK & WHITE
- SCHEDULE PRINT JOBS BY DATE AND TIME
- DIGITAL ENLARGEMENT / REDUCTION 5% - 3600%
- ONE-STEP FILE VIEWING, PANNING, AND ZOOMING
- IMAGE STAMPING ALLOWS MERGING OF TWO FILES FOR PRINTING



KIP PRINTNET



KIP PrintNET is a true web-based print production tool that delivers powerful color file viewing & printing, KIP C7800 job queue management and administration features without the need to install any software applications on network computers. Users may select and print single or multiple files, complete with image adjustments such as scaling, stamping and color management.

The PrintNET viewer is operating system independent, quickly displaying images in crisp color, grayscale or b&w for precise graphics, photos and fine lines. Integrated image viewing provides instant file authentication and an accurate representation of the final printed product, complete with custom image settings.

- PRINT FULL JOB SETS FROM ANYWHERE
- UNLIMITED NUMBER OF FILES PER JOB
- 100% WEB BROWSER COMPATIBILITY
- INTEGRATED VIEWING DISPLAYS ACCURATE IMAGES
- APPLY PRINT SETTINGS TO SINGLE FILES OR COMPLETE JOBS
- FAST FILE PROCESSING FOR MAXIMUM PRODUCTIVITY





CERTIFIED KIP PRINT DRIVERS



KIP certified application drivers support 32 & 64 bit printing features including set collation, fast spooling for multiple copies or sets, data tracking for job accounting, media selection & Windows 7 Device Experience. AutoCAD versions 2010 and newer are fully supported.



KIP CLOUD PRINTING



The ability to produce large prints using simple email with attachments and a few key words helps keep mobile clients on the go to stay productive.

KIP Cloud Printing is a direct email based feature that does not use any intermediary servers, providing total document privacy and security for printing from any connected device.

- USE ANY PHONE, TABLET, LAPTOP OR PC
- NO NEED TO INSTALL DRIVERS OR APPS
- ANY WEB BROWSER & EMAIL PROVIDER
- NO LEARNING CURVE OR TRAINING
- PRINT FILES VIA EMAIL ATTACHMENTS
- OPTIONAL KEYWORDS PROVIDE EXPANDED FLEXIBILITY



KIP COLOR RIP



KIP Color RIP gives imaging professionals advanced color management with integrated support for professional level color management using ICC profiles.

KIP Color RIP software includes powerful quality control features, image editing capabilities, advanced image paneling, nesting for optimum media usage and much more.

- RIP SYSTEM FOR GRAPHIC FILES
- EXPANDED PRINT COLOR GAMUT
- PROFESSIONAL COLOR MANAGEMENT
- IMAGE TILING, CROPPING, & NESTING
- ADVANCED PREFLIGHT CONTROLS
- INTEGRATES WITH MULTIPLE PRINTERS



KIP COST REVIEW APPLICATION



Operational cost is based on toner coverage, media type and system maintenance. These costs are calculated and translated into detailed reports to accurately invoice users, departments, projects or clients.

When activated, the KIP Track system requires operators to provide username & password information before operating a KIP system. Activity reports can then be generated related to individual users or projects. KIP Track print controls are integrated with the KIP Cost Review Application.

- TOTAL PRINTING SUMMARY
- TONER COVERAGE REPORTS
- MEDIA REPORTING
- COST PER PRINT REPORTS
- SERVICE COST REPORTS
- RECENT JOBS REPORTS



KIP C7800 SPECIFICATIONS

GENERAL

Description	High Production B&W and Color Wide Format print system
Type	LED Array Electro Photography
Fusing Method	Heat Roller - Pressure
Development	Contact type, single component non magnetic
Charge Method	Corona
Transfer Method	Transfer roller with Transport belt
Speed	Up to 4,200 square feet/390 square meters per hour in B&W Up to 3,500 square feet/325 square meters per hour in Color
First Print Output Time	< Less than 43 seconds E size/A0
Warm Up Time	3 minutes from power on
Configurations	Console Printer
Roll	3 Rolls with Auto Sheet Feed
Power Consumption	Standby: 0.8 kW Printing: 2.0 kW Power Saving Mode: 10 W
Electrical Requirements	230 V 50/60 kHz 20 A

PRINTER

Print Resolution	600 x 2400 dpi
Paper Capacity	4,500 square feet/418 square meters + Auto Sheet Feeder
Output sizes width	11 - 36 in./297 mm to 914 mm
Output sizes length	8.5 in. to 130 ft./210 mm to 40 m
Media Loading	Automatic roll loading with auto trim
Standard	Bond: 20 lb., 24 lb., 32 lb., 40 lb., Translucent Bond 18 lb. (70 - 150 gsm) Film: Double Matte/3 mil (75 micron)
Specialty	Weather Proof Banner Film, Waterproof Bond 24 lb., Film Clear Adhesive back/6 mil(2 mil film/4 mil carrier, Blue Back 32 lb., Digital Banner Media/10 mil, Bright Fluorescent Bond 24 lb., (Yellow, Orange, Green, Blue)

Environment

Dimensions	54"/1376 mm (Width) x 31"/790 mm (Depth) x 57"/1450 mm
Minimum Space Requirements	59"/1,498 mm (Front), 90"/2,300 mm (Rear w/Stacker), 48"/660 mm (Left), 26" (Right) Distances are from printer to wall/obstruction
Humidity	20 to 70% RH (Non Condensing)
Temperature	59 to 81 Fahrenheit/15 to 27 Celsius
Weight	Approximately 1190 lb./540 kg
Ozone	Less than 0.05 ppm (Average 8 hrs)
Acoustic Noise	Less than 60 db (Standby), Less than 65 db (Printing)

IMAGE PROCESSING

Controller type	Embedded with Windows 7 CPU: Quad Core Xeon 2.13 GHz
CPU	Intel Quad Core 2.13 GHz
Memory	3 GB
Hard drive	SSD SATA 3 160 GB
Compatible File Formats	Raster Color: TIFF, JPG, JPG2000, PNG, BMP, GIF, TGA, RLE/RLC Vector Color/Mono: HPGL, HPGL/2, HP-RTL, Postscript(PS/EPS), Adobe PDF, Autodesk DWF, Multipage PDF & DWF Raster Monochrome: TIFF Grp 3 & 4, CALS Grp 4, Grayscale TIFF, IBM IOCA, Intergraph CIT/TG4, Government C4 Vector Monochrome: Calcomp 906/907

SOFTWARE APPLICATIONS

Standard	Touch Screen Printing: Up to 10 mono/color images from USB or Network locations Certified ACAD Drivers: Currently released versions up to 2012 Microsoft Certified Windows Drivers: Print in B&W & color Cost Review application: PC based application to review toner/service costing on the C7800
Technical	KIP Print: PC based submission utility features ribbon interface job building KIP PrintNET: Web Browser based submission utility delivers powerful browser independent features Cloud Printing: KIP Web Apps offer the ability to produce large prints using nothing more than an email attachments and key words
Graphics	KIP RIP Professional Color Management Application

OPTIONS

Hardware	KIP C7800 Stacker, KIPFold System
Software	PDF and Postscript printing, KIP Connectivity Package: Allows external RIP interface

THE COLOR OF KIP IS GREEN



KIP is committed to product designs that promote environmental health and sustainability. Our goal is to consistently improve and refine the technologies in KIP products to keep our planet green.

The greatest environmental impact of KIP products is through the actual operation of our products and solutions. Our goal is to improve the customer experience by integrating environmental considerations into our business strategy – resulting in superior products.

KIP EARTH CONSCIENTIOUS ASPECTS

- ENERGY STAR QUALIFIED
- ROHS COMPLIANCY
- ISO 14001 STANDARDS
- OZONE EMISSIONS FILTERS
- UL/UL-C APPROVED
- ORGANIC, RECYCLABLE PHOTORECEPTORS
- RECYCLABLE TONER CONTAINERS
- PRINTS ON RECYCLED PAPER
- AUTO IMAGE ROTATION & MEDIA SELECTION ENSURE MINIMAL PAPER WASTE

KIP PREMIER PERFORMANCE & BUILD QUALITY

KIP is committed to providing the highest value standards by combining the best in hardware & software technology to create superior products at affordable prices. KIP systems are quality engineered for production class operation and reliability. State-of-the-art printing technologies and advanced self diagnostic systems maintain system productivity to ensure maximum uptime. We differentiate our products by integrating environmental benefits such as energy efficiency, emissions reduction and the ability to recycle supply containers, to deliver an improved operational experience.





WWW.KIP.COM

U.S.A. ■ Phone: (800) 252-6793 ■ Email: info@kipamerica.com
CANADA ■ Phone: (800) 653-7552 ■ Email: info@kipcanada.com

KIP is a registered trademark of the KIP Group. All other product names mentioned herein are trademarks of their respective companies.
All product features, prices and specifications are subject to change without notice. Complete product specifications are available at www.kip.com

